

AIEx LMS

YOUR ALL-TIME
SUSTAINABLE SOLUTION



Learning Management System

AN INTEGRAL PART OF EVERY COMPANY

Training isn't just important to any company, it is vital.

TOWARDS THE LEARNING COMPANY

A Learning Company is:
an organisation which facilitates the learning of all of its members and continuously transforms itself.

A Learning Company is one which:

- (i) has a climate in which individual members are encouraged to learn and to develop their full potential: people perform beyond competence, taking initiatives, using and developing their intelligence and being themselves in the job; and which...
- (ii) extends this learning culture to Include customers, suppliers and other significant stakeholders wherever possible.

In this presentation

MAIN PILLARS OF THE LEARNING COMPANY

- LEARNING MANAGEMENT SYSTEMS
- VIRTUAL CLASSROOM
- E-LEARNING



Company LMS

WHAT IS IT?

LMS stands short for **L**earning **M**anagement **S**ystem.

Learning, because you use it to deliver education courses or training programs.

Management, because it helps you organize these courses (create them, change them, assign them to students, grade them, etc).

System, last but not least, is just a fancy word that translates to "software". An LMS is a computer program. Just like  helps you write documents and  helps you manage your emails, LMS is a software program that helps you create, manage and deliver online courses and other learning content to your employees.



Company LMS

HOW CAN YOU USE IT?

The two main use cases for LMS software are

- internal (employee training)
- external (customer training)

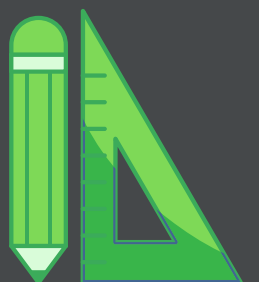
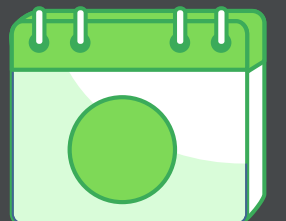


ELEARNING-AIE.COM

5 reasons why you need a LMS:

ELEARNING-AIE.COM

- 1 SAVES YOU MONEY**
You can save your company money, since there are no more travel, accommodation, and instructor costs, or expensive training conferences.
- 2 AVAILABLE EVERY-WHERE & EVERY-WHEN**
The learning experience is no longer bound to a classroom. Employees can take courses at their own pace, wherever and whenever it's convenient.
- 3 HUMAN RESOURCES FLEXIBILITY**
A learning platform allows you to train the staff from different locations at no extra cost.
- 4 EMPOWER ADMINISTRATION**
You can reduce senior employees' workload to cut down the amount of face-to-face mentoring.
- 5 SOPHISTICATED ANALYSIS AND REPORTING**
It's easy to keep track of who has completed a course and how well they performed.



How Can a LMS Help Your Business?

New Hire
Orientation



Product Knowledge
Training



Job-Specific Skills
Training



Sales and Customer
Support Skills Training

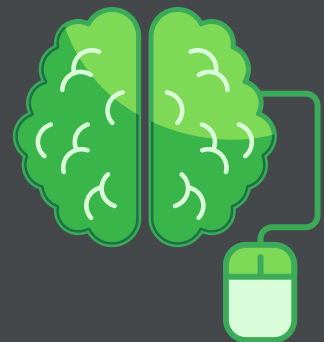


New Hire Orientation

With a LMS, you can put most of your employee induction training on autopilot. You only need to create a core training program once, and then assign it to all new hires.

A good induction training experience can

- simplify and streamline the new hire adaptation process,
- increase their retention, and
- get them to work faster.



ELEARNING-AIE.COM

Product Knowledge Training

Product learning can either be

- a part of onboarding for new hires or
- can be accessible for any employee who needs to refresh their knowledge.

With an LMS for company training, you can also

- educate staff on new products or
- services,
even before those products and services are released.



Job-Specific Skills Training

- Job-specific skills are skills required for a particular job.
- Because technology is constantly changing, even tenured employees need to update skills regularly.
- With a company LMS, it's easy to involve staff members in learning on a regular basis.
- It's even easy to involve and engage staff members in collaborating to develop new training.



Sales and Customer Support Skills Training

Customer support skills training educates employees on how to make customers feel listened to, while quickly executing processes that resolve problems.



[ELEARNING-AIE.COM](https://elearning-aie.com)

VIRTUAL CLASSROOM

Adobe Connect

- You create your own meeting rooms. No reservations are necessary.
- You can prepare them in advance by uploading material.
- Everything is stored in the rooms between sessions.
- Organise Break out rooms for specific assignments

Make no mistake, the classroom still exists—only now it exists online.



ELEARNING-AIE.COM

VIRTUAL CLASSROOM

Adobe Connect



Exceptional Audience Experiences, incl. rich media content, enhanced viewing, high quality video & audio



It is highly recommended to download the free Adobe Connect App available online



Share your screen

Record meetings



ELEARNING-AIE.COM

VIRTUAL CLASSROOM

Adobe Connect



You control users, content, access, and features through the administration controls of Adobe Connect.



All management connections to the servers occur over encrypted Secure Shell (SSH), Secure Sockets Layer (SSL), or Virtual Private Network (VPN) channels and remote access always requires two-factor authentication.



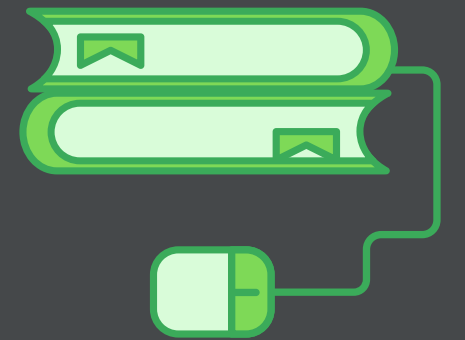
ELEARNING-AIE.COM

eLearning

- **CREATE YOUR OWN ELEARNING COURSES**

Create the Learning Path:

By centralising your company's  and  you may easily create a learning path  strategically planning and assigning  courses to each staff member.



- **MANAGE YOUR OWN ELEARNING COURSES**

Keep track  of your learners' progress at any given time so that you can better understand their strengths and weaknesses without fail.



- **DELIVER**

Ongoing e-learning has a direct effect

- on boosting employee morale,
- satisfaction and longevity up to +60%

Recommendations

- By investing in a LMS, you can provide your employees and partners with continuous training.
- Ongoing professional development is a driving force behind achieving goals and remaining competitive
- Traditional face-to-face learning  is combined with methods of  eLearning so that learners can reach their full potential.
- The  ultimately, is to affect real change through engaging employees.
- Companies that know  more, grow  more!

Let's work
together



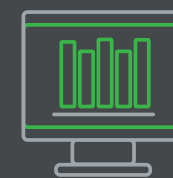
EMAIL

softskills@aie.al | www.aie.al



MOBILE

+35544813303



MAILING ADDRESS

Rr. e Dibrës, Kompleksi Halili,
Nd. 64, H. C-1, K. 9, Ap. 37,
P.O.: 1017, Tirana, Albania

ELEARNING-AIE.COM